

LEVEL5

2025 CATALOG



**welcome
to the
RED ZONE**

AUTOMATIC TAPER

welcome to the RED ZONE

- Increase taping efficiency by applying the first bed of mud and tape in one pass.
- All components are precision machined using the highest quality aluminum, stainless steel and composite materials. The LEVEL5 automatic taper performs flawlessly.
- New QUICK-CLEAN head features a simple thumb screw to remove the cover plate for easy access and cleaning.
- Increase job throughput and profitability without compromising the finish quality your customers expect.

APPLY MUD & TAPE IN A SINGLE PASS

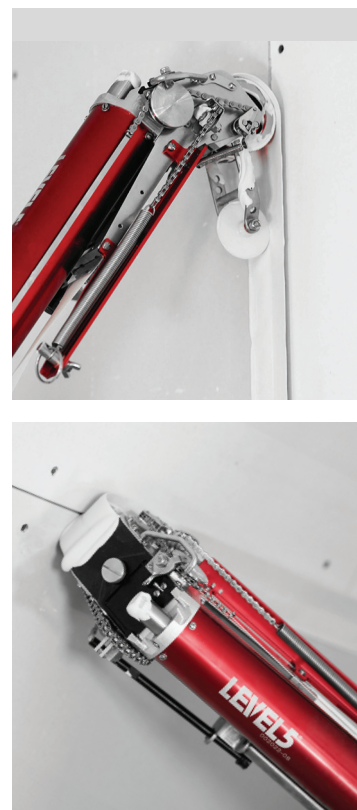
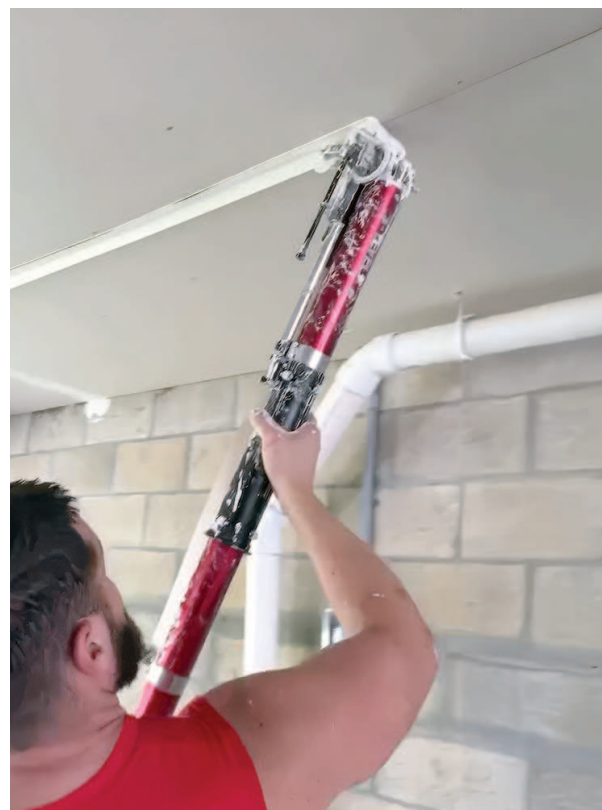
The automatic taper is used to apply the optimal amount of joint compound and tape to corners, flat and butt joints. Every component is designed to ensure the auto taper is lightweight while providing the highest durability, reliability, and corrosion resistance.

TAPER TUBE
Aircraft-Grade Anodized Aluminum

CUTTER ROD ASSEMBLY
Hard-Coat Anodized

COVER PLATE
Featuring A Quick-Clean Design

- OPEN WHEEL DESIGN
For Easy Cleaning
- CREASER WHEEL
For Bedding Tape Into Corners / Ceilings
- JEWELER CHAIN
Stainless Steel Construction
- TUBE BANDS
Sturdy Stainless Construction
- CONTROL SLEEVE
Hard-Coat Anodized Aluminum
- INTERNAL PLUNGER SEAL
Proprietary Urethane Rubber
- TAPE ROLL HOLDER
Features A Tensioner For Precise Control
- CREASER TRIGGER
All-Aluminum Control For Creaser Wheel



MINISHOT

- The 45.5-inch long MiniShot delivers finishing compound through your favorite drywall finishing heads quickly, effortlessly and with high precision.
- A custom gas cylinder provides powerful back pressure - double the force of competing pressurized compound tubes - enabling you to apply a wider range of compound thicknesses and achieve a more consistent flow.
- When you apply light pressure to the MiniShot against the wall the nozzle end depresses to release the flow. The MiniShot is easier on your wrists, shoulders & back.

DESCRIPTION	SKU#
MiniShot	4-772
MiniShot Ext. Handle	4-773

- UNIVERSAL BALL END
Fits Most Angle Heads
- DISPENSING NOZZLE
Stainless Steel Construction
- FILLING VALVE
Stainless Steel
- CLEAR COMPOSITE TUBE
- EXTRUDED ALUMINUM HANDLE
Color Anodizing
- 72 PSI GAS CYLINDER
Consistent Flow
- THREADED END
Attach Additional Extensions To Reach Higher

A HUGE UPGRADE IN CORNER FINISHING

A lightweight but powerful gas cylinder and dispensing nozzle delivers steady pressure, pushing compound through a variety of finishing heads without the manual input of traditional corner applicator boxes. The clear composite chamber holds more compound than standard applicator boxes, meaning fewer trips back to the pump.

- MUD FLOW ADJUSTER
- STAINLESS STEEL
Latches And Tube Straps
- HIGH STRENGTH
Composite Cone
- FREE
18" Extension Handle



welcome to the RED ZONE

FLAT BOXES

FINISH SEAMS IN A FRACTION OF THE TIME

Flat boxes are used to apply joint compound over seams, typically with smaller boxes for base coats and larger ones for additional layers and feathering the compound. LEVEL5 flat boxes have precision-machined parts, anodized aluminum housing, 6 settings for optimal compound flow, and a hinged lid for easy cleaning.

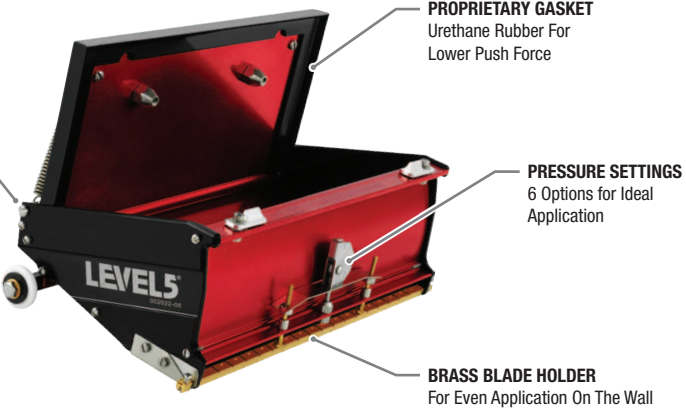
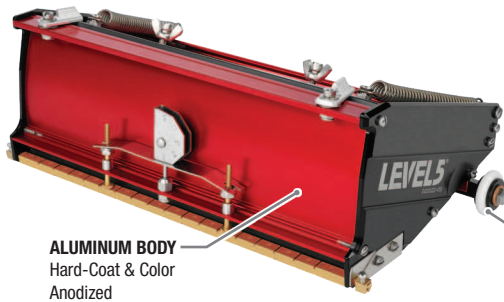
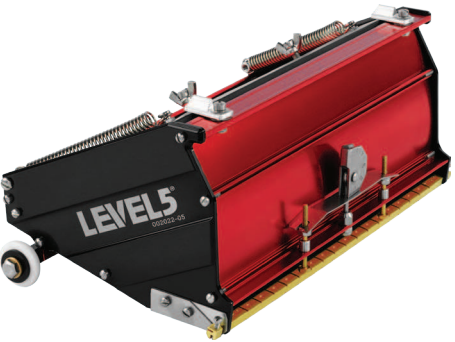
- Applies an even layer of joint compound to taped wall and ceiling joints.
- Flexible brass blade holder ensures proper compound application and crown for fill or finish coats.
- Six pressure settings for precise application with an easy-push pressure lid.
- Hinged lid design makes for easy cleaning.
- Color-anodized aluminum and black hard-coat side plates for corrosion resistance and durability.

SIZE (STANDARD)	SKU#
7"	4-764
10"	4-765
12"	4-766
14"	4-770

MEGA FLAT BOXES

Mega flat boxes feature the same construction and design, but hold up to 30% more compound. They reduce trips to the compound pump, but add some weight while in use.

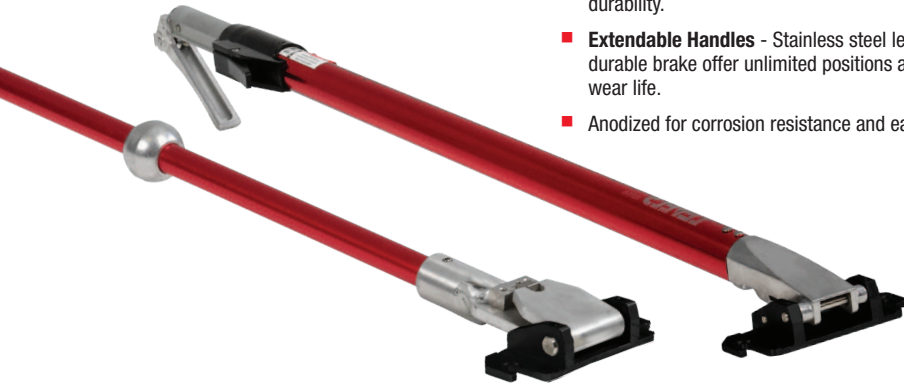
SIZE (MEGA)	SKU#
7"	4-767
10"	4-768
12"	4-769



FLAT BOX HANDLES

- Compatible with LEVEL5 flat boxes and most other major brands.
- Lightweight, heavy-gauge aluminum ensures extreme durability.
- **Extendable Handles** - Stainless steel lever and durable brake offer unlimited positions and long wear life.
- Anodized for corrosion resistance and easy cleaning.

SIZE	SKU#
23" - 32" Ext. Handle	4-782
30" - 42" Ext. Handle	4-781
40" - 62" Ext. Handle	4-780
48" - 78" Ext. Handle	4-759
34" Fixed Length Handle	4-711
42" Fixed Length Handle	4-712
54" Fixed Length Handle	4-740



COMPOUND PUMP & ACCESSORIES

FILL YOUR LEVEL5 AUTOMATIC TOOLS

The LEVEL5 Drywall Pump is the backbone for automatic taping setups. This pump features a corrosion-resistant anodized tube & handle, a durable urethane seal, and a precision flapper valve for minimizing pump priming.

Includes a box filler and is ready to use out of the box. The built-in wrench is made for quick changes between the filler valve and gooseneck. The premium stainless steel Gooseneck (sold separately) lets you load the automatic taper seamlessly.

- Designed to fill most tools in an automatic tool setup.
- Black hardcoat anodized tube for easier cleaning, smoother pumping, and long-lasting durability.
- The long handle provides better leverage, easier tool filling, and less strain.
- Durable urethane seal outlasts standard rubber seals.

DESCRIPTION	SKU#
Compound Pump	4-771
Gooseneck	4-714
Box Filler	4-715



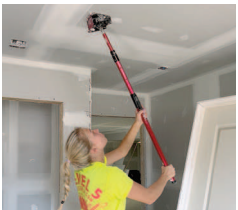
NAIL SPOTTER

FILL & FINISH FASTENER INDENTATIONS

A nail spotter fills and finishes fastener indentations (screw or nail) in one or two passes, making the process faster and easier than with traditional hand tools. It reduces sanding needs and compatible handles provide extended reach for high walls and ceilings, reducing time spent on stilts.

- Applies joint compound to nail and screw spots on seams.
- Built with anodized aluminum and stainless steel for strength, corrosion resistance, and durability.
- Equipped with a high-carbon steel blade for smooth, even compound application.
- Premium urethane seal prevents leaks and ensures consistent compound flow.
- Hinged design enables easy cleaning and maintenance.

SIZE	SKU#
2"	4-754
3"	4-755
31" - 50" Ext. Handle	4-792
43" - 72" Ext. Handle	4-796
50" Fixed Handle	4-777



welcome to the RED ZONE

CORNER APPLICATOR



CORNER APPLICATION MADE EASY

Designed to efficiently & evenly apply joint compound to inside and outside corners using the appropriate finishing head. These boxes are constructed from anodized aluminum and feature a proprietary urethane wiper seal that offers a smooth operation and outstanding wear life.

- Applies joint compound to inside and outside corners with the right finishing head.
- Made of high quality, anodized aluminum and a long-wearing urethane wiper seal.
- Proprietary stainless steel bonding process reduces weight and doubles cone life.
- Enlarged handle bracket prevents pressure plate from bending under any load.

SIZE	SKU#
7"	4-701
8"	4-702
31" - 50" Ext Handle	4-794
43" - 72" Ext Handle	4-798
50" Fixed Handle	4-778

CORNER ROLLER



SEAMLESSLY BED TAPE INTO INSIDE CORNERS

The LEVEL5 corner roller, made for daily commercial use, features precision-machined billet aluminum and a floating stainless steel wheel assembly for straight 90° angles, even on imperfect seams. This tool is used after applying tape to internal corners, and will quickly push out excess bedding compound for a professional taping experience.

- Removes air pockets and excess mud, forming sharp, precise corners with smooth tape flanges.
- The LEVEL5 corner roller is user-friendly and boosts drywall finishing speed immediately.
- Stainless steel rollers with Kevlar bearings and Teflon washers ensure smooth operation without locking or skipping, keeping tape perfectly in place.
- Precision-machined from premium aluminum, hard-coat anodized for durability and corrosion resistance.

SIZE	SKU#
Corner Roller	4-707
31" - 50" Ext Handle	4-792
43" - 72" Ext Handle	4-796
50" Fixed Handle	4-777

CORNER FINISHER



PRECISION IN EVERY CORNER

The corner finisher, or "Anglehead," fills and feathers inside 90° corners after tape is set with a roller. It boosts efficiency by finishing both wall surfaces simultaneously, delivering a sharper, professional-grade finish than hand taping & finishing methods.

- Used to apply compound and feather inside corners with a sharper corner than with traditional hand tools.
- Finishes both wall surfaces of an inside corner simultaneously, greatly boosting efficiency.
- Precision-machined billet aluminum body and color anodized for corrosion resistance and durability.
- Rubber-tired wheels glide smoothly over taped corners, reducing friction and preventing tape movement during the initial glazing step.

SIZE	SKU#
2.5"	4-732
3"	4-733
3.5"	4-734
4"	4-735
31" - 50" Ext Handle	4-795
43" - 72" Ext Handle	4-799
50" Fixed Handle	4-779

FIXED LENGTH HANDLES



FIXED LENGTH HANDLES

- Anodized for long term durability and easy cleaning.
- Heavy gauge, yet lightweight extruded aluminum design

SIZE	SKU#
50" Fixed Length Corner Roller / Nail Spotter Handle	4-777
50" Fixed Length Corner Applicator Handle	4-778
50" Fixed Length Corner Finisher Handle	4-779

INDIVIDUAL HANDLE ADAPTERS

- Compatible with Fixed and Extendable Handles.
- Our new and improved handle design lets you replace the handle head if damaged or swap in adapters for other LEVEL5 tools.

DESCRIPTION	SKU#
Corner Roller / Nail Spotter Adapter	4-877
Corner Applicator Adapter	4-878
Corner Finisher Adapter	4-879

EXTENDABLE HANDLES



EXTENDABLE HANDLES

- Made of heavy gauge but light-weight aluminum.
- A simple thumb-trigger adjustment mechanism makes changing lengths quick and simple.
- Anodized for long-term durability and easy cleaning.
- Adapts to provide a comfortable position for any job.

SIZE	SKU#
31" - 50" Short Corner Roller / Nail Spotter Handle	4-792
31" - 50" Short Corner Applicator Handle	4-794
31" - 50" Short Corner Finisher Handle	4-795
43" - 72" w/ Corner Roller & Nail Spotter Adapter	4-796
43" - 72" w/ Corner Applicator Adapter	4-798
43" - 72" w/ Corner Finisher Adapter	4-799

welcome to the RED ZONE

AUTOMATIC TOOL CASES

- **Automatic Taper / MiniShot Case** - Features a spacious interior for fitting handles and corner tools.
- Integrated label slots for organizing your set up.
- Convenient handles for easy transportation.

DESCRIPTION	SKU#
Auto Taper / MiniShot Case	CASE-I

PROTECT YOUR INVESTMENT

Built for tough job site conditions, these cases offer superior protection and convenient storage. The premium nylon shell shields against moisture, dust, and dirt, while reinforced end caps safeguard the head and bottom of the taper/miniShot. Inside, added padding ensures extra cushioning to keep your tools secure during transport and storage.



DESCRIPTION	SKU#
Compound Pump Case	4-771CASE-F



INDIVIDUAL CASES



FLAT BOXES & NAIL SPOTTERS

Features EVA foam precisely cut to match the dimensions of each flat boxes and nail spotter model. Offering outstanding drop protection, and a convenient way to organize and store your tools.

SIZE	SKU#
7" Standard Box Case	4-764CASE-C
7" MEGA Box Case	4-767CASE-C
10" Standard Box Case	4-765CASE-C
10" MEGA Box Case	4-768CASE-C
12" Standard Box Case	4-766CASE-D
12" MEGA Box Case	4-769CASE-D
14" Standard Box Case	4-770CASE-D
2" Nail Spotter Case	4-754CASE-B
3" Nail Spotter Case	4-755CASE-B

CORNER TOOLS



FINISHERS, APPLICATORS & ROLLERS

Protect your corner tools like a pro. The premium nylon shells protect against dirt, dust and moisture, while industrial grade stitching ensures a long life.

SIZE	SKU#
2.5" Corner Finisher Case	4-732CASE-B
3" Corner Finisher Case	4-733CASE-B
3.5" Corner Finisher Case	4-734CASE-B
4" Corner Finisher Case	4-735CASE-B
7" Corner Applicator Case	4-701CASE-E
8" Corner Applicator Case	4-702CASE-E
Corner Roller Case	4-707CASE-A

BANJO CASE



PROTECT YOUR TAPING TOOLS

Protect your banjo taper with a custom designed case, featuring a nylon exterior and lined interior to prevent damage in tough conditions.

SIZE	SKU#
Banjo Taper Case	5-311CASE-H

welcome to the RED ZONE

4-600P

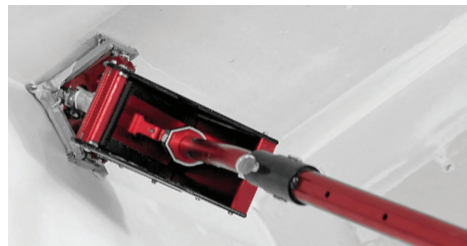


THE ENTRY TO AUTOMATIC FINISHING

Featuring all of the necessary tools to convert a finishers toolkit into a fully automatic tool set up, this is the most popular automatic taping & finishing set in the LEVEL5 roster. It contains all the necessary tools to start completing jobs up to 300% faster, while being the most affordable entry point.

- Most affordable full automatic taping tool set up.
- Finishers work up to 300% faster, enabling competitive quotes and quicker job completion.
- Backed by a “no-hassle” 7 year warranty.
- Includes a bonus hand tool set for small or specialty tasks.

SET CONTENTS	SKU#
Automatic Taper	4-760
Gooseneck Filler Tube	4-714
Compound Pump	4-771
10” Flat Box	4-765
12” Flat Box	4-766
42” Flat Box Handle	4-712
3” Corner Finisher	4-733
54” Corner Finisher Handle	4-779
7” Corner Applicator	4-701
54” Corner Applicator Handle	4-778
Corner Roller	4-707
50” Corner Roller Handle	5-777
BONUS HAND TOOL SET	5-623



4-661P



THE FULL TAPING SET W/ EXT. HANDLES & MINISHOT

This set includes upgrades for tackling corners and high walls with ease. The MiniShot eliminates manual pushing in corner finishing, ensuring consistent results. Adjustable extension handles provide increased reach and flexibility on the job.

- Offers a more robust and consistent corner finishing experience.
- Finishers work up to 300% faster, enabling competitive quotes and quicker job completion.
- Backed by a “no-hassle” 7 year warranty.
- Includes a bonus hand tool set for small or specialty tasks.

SET CONTENTS	SKU#
Automatic Taper	4-760
Gooseneck Filler Tube	4-714
Compound Pump	4-771
10” Flat Box	4-765
12” Flat Box	4-766
40”- 62” Flat Box Handle	4-780
3” Corner Finisher	4-733
31”- 50” Corner Finisher Handle	4-795
MiniShot	4-772
Corner Roller	4-707
31”- 50” Corner Roller Handle	4-792
BONUS HAND TOOL SET	5-623



4-677P



THE ULTIMATE TAPING & FINISHING SET

Designed for contractors & crews alike to upgrade their business to an automatic finishing set up. This set comes with additional flat boxes, corner finishers, compound pumps, wear parts, and a nail spotter for growing businesses.

- For growing business looking to scale up their crew and take their projects to the next level.
- Includes two pumps for filling multiple tools at the same time.
- Finishers work up to 300% faster, enabling competitive quotes and quicker job completion.
- Backed by a “no-hassle” 7 year warranty.

SET CONTENTS	SKU#
Automatic Taper	4-760
Gooseneck Filler Tube	4-714
Compound Pump (x2)	4-771
7” Flat Box	4-764
10” Flat Box	4-765
12” Flat Box	4-766
42” Flat Box Handle	4-712
3” Corner Finisher	4-733
3.5” Corner Finisher	4-734
31”- 50” Corner Finisher Handle	4-795
MiniShot	4-772
Corner Roller	4-707
3” Nail Spotter	4-755
31”- 50” Corner Roller/Nail Spotter Handle (x2)	4-792
Outsider Wheel Kit	4-862
BONUS HAND TOOL SET	5-623



4-630



THE STARTER TAPING SET

This set is the perfect entry into automatic taping, featuring all of the essential tools for speeding up the taping workflow. You can fill the automatic taper, and roll out the bedded tape up to 300% faster than with traditional hand tools.

- An affordable combination for speeding up the taping process.
- Precision machined components and anodized finish for corrosion resistance.
- Backed by a “no-hassle” 7 year warranty.

SET CONTENTS	SKU#
Automatic Taper	4-760
Gooseneck Filler Tube	4-714
Compound Pump	4-771
Corner Roller	4-707
50” Corner Roller Handle	4-777



welcome to the RED ZONE

4-602

THE ENTRY TO AUTOMATIC FINISHING

Made to complete all steps of automatic finishing after taping. Apply mud to taped seams, fill & finish inside corners and bed tape into corners with this comprehensive set. This is the most affordable entry point for upgrading the finishing workflow with automatic tools.

- Most affordable full automatic taping tool set up.
- Finishers work up to 300% faster, enabling competitive quotes and quicker job completion.
- Backed by a “no-hassle” 7 year warranty.



SET CONTENTS	SKU#
Compound Pump	4-771
10” Flat Box	4-765
12” Flat Box	4-766
42” Flat Box Handle	4-712
3” Corner Finisher	4-733
54” Corner Finisher Handle	4-779
7” Corner Applicator Box	4-701
50” Corner Applicator Handle	4-778
Corner Roller	4-707
54” Corner Roller Handle	4-777

4-687P

FINISHING SET W/ EXT. HANDLES & MINISHOT

This set includes upgrades for tackling corners and high walls with ease. The MiniShot eliminates manual pushing in corner finishing, ensuring consistent results. Adjustable extension handles provide increased reach and flexibility on the job.

- Offers more flexible adjustments and a consistent corner finishing experience.
- Finishers work up to 300% faster, enabling competitive quotes and quicker job completion.
- Backed by a “no-hassle” 7 year warranty.
- Includes a bonus hand tool set for small or specialty tasks.



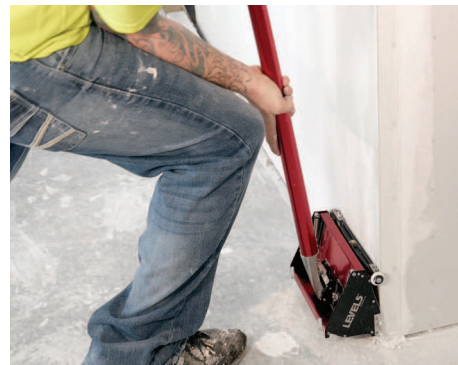
SET CONTENTS	SKU#
Compound Pump	4-771
10” Mega Flat Box	4-768
12” Mega Flat Box	4-769
40”- 62” Flat Box Handle	4-780
3” Corner Finisher	4-733
3.5” Corner Finisher	4-734
31”- 50” Corner Finisher Handle	4-795
MiniShot	4-772
Corner Roller	4-707
31”- 50” Corner Roller Handle	4-792
BONUS HAND TOOL SET	4-623

4-605

10”/12” STANDARD BOXES W/ EXT. HANDLE

Designed to upgrade the process of filling and feathering compound across taped seams. Standard boxes offer a balance of mud storage versus weight on the wall. Extension handles let finishers reach high walls & ceilings while spending less time on stilts.

- The smaller box is used to apply a base coat, while the larger applies secondary layers and feathers our the compound across the wall.
- Apply compound to seams up to 300% faster than with traditional hand tools, with more consistent results.
- Backed by a “no-hassle” 7 year warranty.



SET CONTENTS	SKU#
Compound Pump	4-771
10” Flat Box	4-765
12” Flat Box	4-766
40”- 62” Flat Box Handle	4-780



4-629

10”/12” MEGA BOXES W/ EXT. HANDLE

Designed to upgrade to process of filling and feathering compound across taped seams. MEGA boxes offer up to 30% more capacity for fewer trips to the pump. Extension handles let finishers reach high walls & ceilings while spending less time on stilts.

- The smaller box is used to apply a base coat, while the larger applies secondary layers and feathers our the compound across the wall.
- MEGA flat boxes offer up to 30% more capacity for fewer trips to the pump. Recommended for individuals who don’t mind extra weight in their tools.
- Apply compound to seams up to 300% faster than with traditional hand tools, with more consistent results.
- Backed by a “no-hassle” 7 year warranty.



welcome to the RED ZONE

BANJO TAPER



TAPE. CUT. REPEAT.

The LEVEL5 Banjo Drywall Taper is a semi-automatic tool for faster, more efficient taping of paper tape or Fibafuse and ideal for jobs of 10+ sheets. Though slower than an automatic taper, it significantly outpaces hand taping while delivering professional results. Built from anodized aircraft-grade aluminum, it features a hinged lid with a urethane seal, industrial latches, an adjustable flow gate with tape cutter, and a soft-grip handle.

- Simultaneously applies an even coat of joint compound and tape over flat drywall seams.
- The flow gate includes an integrated tape cutter for easy adjustment of compound flow based on consistency.
- The hinged cover allows easy cleaning and maintenance.
- Made from aircraft-grade aluminum for durability, and anodized for corrosion resistance and performance.



DESCRIPTION	SKU#
Drywall Banjo	5-311

4-650

THE SEMI-AUTOMATIC STARTER SET

Designed as a cost-effective entry-level option, this set is perfect for individuals exploring the world of automatic and semi-automatic finishing tools. It covers all of the taping & finishing needs a finisher might have while being an affordable option.

- An affordable entry point into automatic taping & finishing.
- Features all necessary tools to get through projects in less time and take on larger projects.
- Backed by a “no-hassle” 7 year warranty.



SET CONTENTS	SKU#
Drywall Banjo	5-311
Compound Tube	4-741
3.5” Corner Flusher	4-744
10” Flat Box	4-722
12” Flat Box	4-723
Corner Roller	4-708
42” Flat Box Handle	4-712
Corner Roller/Nail Spotter Handle	4-775

CORNER FLUSHERS

CORNER FINISHING MADE SIMPLE

A drywall corner flusher, or “glazer,” applies joint compound to inside corners for a smooth, seamless finish. LEVEL5 flushers attach to standard or extendable handles with the universal ball-end adapter, and glide along taped corners to fill bevels and feather edges. Constructed from robust stainless steel and a precision-machined, billet aluminum chassis for long-lasting durability.



- Glaze inside corners in one smooth motion for a quick, seamless finish, eliminating the need for multiple passes.
- User-friendly, easy to learn, and ideal for scaling up finishing businesses.
- Attach to any universal ball-end adapter, including standard, extendable handles, compound tubes, or MiniShot.
- Made from 0.5mm high-gauge stainless steel with a precision-machined aluminum chassis and skid plates.

SIZE	SKU#
3”	4-743
3.5”	4-744

OUTSIDE CORNER TOOL

SMOOTH & EASY APPLICATION

The LEVEL5 Outside Corner Tool evenly applies compound to 90° outside corners, simplifying bedding mud application before adding bead. Compatible with the MiniShot, Compound Tube, and Corner Applicators, it efficiently delivers even ribbons of mud to both sides of the corner simultaneously. Its extended length prevents “head flip” under pressure, and the glass-filled polymer construction ensures a long-lasting wear life.



- Dispenses two even ribbons of compound to both sides of an outside corner simultaneously.
- Longer design prevents the applicator head from flipping under pressure.
- Integrated stainless steel ball socket connects to the MiniShot, Compound Tube, and Corner Applicators.
- Durable glass-filled polymer construction for long-lasting performance.

DESCRIPTION	SKU#
Outside Corner Tool	4-746

COMPOUND TUBE

FILL TOOLS & APPLY MUD

The LEVEL5 Compound Tube is a versatile tool for loading tools and applying compound. It features a universal ball nozzle compatible with corner finishers, flushers, and flat seam applicators. To fill, simply draw mixed finishing compound from a bucket for use with the included flat box filler attachment or any compatible finishing head. Built from aircraft-grade anodized aluminum for corrosion-resistance.



- Applies joint compound faster than traditional hand tools. Universal ball nozzle fits most finishing heads.
- Includes a flat box filler nozzle for quickly loading boxes with compound.
- Removable stainless steel cone for easy cleaning. Industrial-grade latches for a secure, leak-free attachment.

DESCRIPTION	SKU#
Compound Tube	4-741

welcome to the RED ZONE

ALUMINUM SKIMMING BLADES

SMOOTHING WALLS HAS NEVER BEEN EASIER

Lightweight and easy to use, LEVEL5 Aluminum-Body Skimming Blades are increasingly popular in drywall finishing. Available in lengths 7" up to 48", they feature a 0.3mm precision blade in a rigid aluminum housing, ensuring smooth compound distribution with exceptional control. For added flexibility, they can be attached to LEVEL5 skimming blade extension handles to reach higher walls & ceilings with ease.



- Produce a mirror-like finish by applying a thin, uniform layer of joint compound over walls & ceilings.
- The proprietary blade edge enables the mud to roll off with ease. It's unique shape minimizes lap marks on large areas.
- 0.3mm European stainless blades ensure consistent, high-quality finishing daily.
- Replaceable blade inserts and end caps allow for affordable maintenance and less downtime.

ALUMINUM BLADES

SIZE	SKU#
7"	4-907
10"	4-910
14"	4-914
16"	4-916
24"	4-924
32"	4-932
40"	4-940
48"	4-948

REPLACEABLE INSERTS

SIZE	SKU#
7"	4-949
10"	4-951
14"	4-950
16"	4-952
24"	4-953
32"	4-954
40"	4-955
48"	4-956

REPLACEABLE END CAPS

DESCRIPTION	SKU#
Aluminum-Body End Caps	4-959



COMPOSITE SKIMMING BLADES

THE PERFECT UPGRADE FOR DIYERS & ENTHUSIASTS

A user-friendly and cost-effective variant of the original Aluminum-Body Skimming Blade, LEVEL5 Composite-Body Skimming Blades use a plastic composite housing with an internal matrix for a lightweight and durable tool. They feature 0.3mm European stainless steel blades with a proprietary design for smoother application and outstanding control. For additional reach on high walls and ceilings, these blades are compatible with LEVEL5 skimming blade handles.



- Composite skimming blades offer professional results at an affordable price, ideal for DIYers and remodelers.
- The proprietary blade edge enables the mud to roll off with ease. It's unique shape minimizes lap marks on large areas.
- The composite housing's proprietary matrix makes it lightweight yet highly rigid.
- 0.3mm European stainless blades ensure consistent, high-quality finishing daily.
- Replaceable blade inserts and end caps allow for affordable maintenance and less downtime.

COMPOSITE BLADES

SIZE	SKU#
10"	4-910C
14"	4-914C
16"	4-916C
24"	4-924C
32"	4-932C

REPLACEABLE INSERTS

SIZE	SKU#
10"	4-451C
14"	4-950C
16"	4-952C
24"	4-953C
32"	4-954C

REPLACEABLE END CAPS

DESCRIPTION	SKU#
Composite-Body End Caps	4-959C



welcome to the RED ZONE

SKIMMING BLADE ADAPTER



FLEXIBILITY FOR YOUR SKIM COATS

The LEVEL5 Skimming Blade Handle Adapter connects extendable handles to LEVEL5 Skimming Blades, adding versatility for finishing high walls and ceilings. It improves speed and reduces wrist and back strain. Made from durable glass-filled composite, it ensures a secure, wobble-free fit with snap-in buttons and a thumb screw for adjustable angles.

- Quick-release adapter enables fast handle changes without sacrificing rigidity.
- The adapter connects to either of the two extendable LEVEL5 skimming blade handles to suit your finishing style.
- Built from lightweight, glass-filled composite material for lasting durability.

DESCRIPTION	SKU#
Adapter for Aluminum Blades	4-941
Adapter for Composite Blades	4-941C



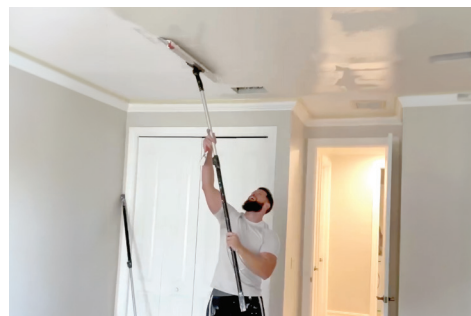
SKIMMING BLADE HANDLES

REACH FURTHER

LEVEL5 Skimming Blade Handles are durable and lightweight to extend your reach on the job. The short (37" - 63") handle is ideal for versatile wall and ceilings applications, while the long (48" - 87") handle provides extra reach and comfort on high ceilings and elevated wall spaces.

- Designed to snap-fit to LEVEL5 Skimming Blade Adapters and Compound Rollers for extended reach.
- Built with premium fiberglass, aluminum, and high impact ABS composite for a long wear life.
- For use with skimming blades, the adapter is required. Compound rollers can be attached without an adapter.
- LEVEL5 Skimming Blade Handles include a threaded adapter in the box.

SIZE	SKU#
37" - 63"	4-942
48" - 87"	4-943
Threaded Adapter	4-909



COMPOUND ROLLERS

APPLY MUD TO WALLS & CEILINGS WITH EASE

LEVEL5 compound rollers simplify applying large amounts of drywall compound to walls and ceilings. The ½-inch reticulated polypropylene nap holds 50% more compound and ensures even application. The 9" and 12" rollers cover large areas before skimming, the 4" roller applies bedding mud to flat seams before taping, and the 2" roller streamlines inside corner application.



- Built to roll joint compound across large areas more efficiently than traditional hand tools.
- The handle snaps securely onto LEVEL5 extendable skimming blade handles.
- Durable 1/4" steel shank resists bending and features nickel plating for corrosion resistance.
- Solvent-resistant composite handle with an ergonomic grip for all-day comfort.
- A variety of sizes available for unique finishing needs.

COMPOUND ROLLERS

SIZE	SKU#
2"	4-006
4"	4-005
9"	4-905
12"	4-906

ROLLER COVERS

SIZE	SKU#
2" - Single	4-002
2" - 3 Pack	4-008
4" - Single	4-001
4" - 3 Pack	4-007
9" - Single	4-901
9" - 3 Pack	4-009
12" - Single	4-902
12" - 3 Pack	4-012

ROLLER FRAMES

SIZE	SKU#
2"	4-004
4"	4-003
9"	4-903
12"	4-904



welcome to the RED ZONE

5-550



EVERYTHING YOU NEED FOR A MIRROR FINISH

This versatile skimming blade set features all of the necessary skimming tools to skim coat in any situation. Featuring professional Aluminum-Body Skimming Blades, a 9” Compound Roller, adapter, medium length handle and a durable transport case.

- Aluminum-Body Skimming Blades offer durability and rigidity on the wall.
- 0.3mm European stainless steel blades with a proprietary blade edge enables the mud to roll off with ease.
- Included adapter connects the extension handle to all skimming blade sizes for extended reach.
- Extension handle snaps into compound roller for better reach while applying mud.
- Includes a protective case for transportation and storage.

SET CONTENTS	SKU#
10” Skimming Blade	4-910
16” Skimming Blade	4-916
24” Skimming Blade	4-924
32” Skimming Blade	4-932
9” Compound Roller	4-905
Handle Adapter	4-941
37” - 63” Handle	4-942
Transport Case	5-551

5-446



THE ULTIMATE SET

Built to outfit a business or crew with everything needed to skim walls in any situation. The professional Aluminum-Body Skimming Blades in conjunction with the included adapter and handle make light work of any skim coating needs. The included 48” Skimming Blade will skim the largest of areas in minimal passes, saving time on the job.

- Designed for teams with large scale skimming tasks.
- Features every size of LEVEL5 Aluminum-Body Skimming Blades.
- Durable, lightweight aluminum profile built for daily job site use.
- 0.3mm European stainless blades ensure consistent, high-quality finishing daily.
- Included adapter connects the extension handle to all skimming blade sizes for extended reach.

SET CONTENTS	SKU#
7” Skimming Blade	4-907
10” Skimming Blade	4-910
14” Skimming Blade	4-914
16” Skimming Blade	4-916
24” Skimming Blade	4-924
32” Skimming Blade	4-932
40” Skimming Blade	4-940
48” Skimming Blade	4-948
Handle Adapter	4-941
37” - 63” Handle	4-942

5-441C



A VERSATILE SKIMMING COMBO

With 3 sizes of skimming blades, an adapter, and medium length extension handle, this set provides the tools to tackle a variety of skimming tasks from tight spaces to expansive walls & ceilings. The strong and lightweight composite blades are perfect for DIYers and remodelers.

- Includes the most popular skimming blade sizes for most skimming tasks.
- The composite housing’s proprietary matrix makes it lightweight yet highly rigid.
- 0.3mm European stainless steel blades with a proprietary blade edge enables the mud to roll off with ease.
- Included adapter connects the extension handle to all skimming blade sizes for extended reach.

SET CONTENTS	SKU#
10” Skimming Blade	4-910C
24” Skimming Blade	4-924C
32” Skimming Blade	4-932C
Handle Adapter	4-941C
37” - 63” Handle	4-942

5-805



ROLL AND SKIM

For finishers looking for a simple, yet effective kit for applying mud and skimming, this combo offers the most popular skimming blade and compound roller sizes for versatility on the job site. Use the roller for applying large amounts of compound across walls and ceilings, and the 24” blade for skimming to a mirror finish.

- Features the most popular size of skimming blade and roller for versatility.
- The proprietary blade edge enables the mud to roll off with ease. It’s unique shape minimizes lap marks on large areas.
- Durable, lightweight aluminum profile built for daily job site use.
- Included handle snaps into the compound roller and skimming blade adapter for extended reach.

SET CONTENTS	SKU#
24” Skimming Blade	4-924
Handle Adapter	4-941
37” - 63” Handle	4-942
9” Compound Roller	4-905

welcome to the RED ZONE

SOFT GRIP JOINT KNIVES

- Perfect for setting & cutting drywall tape, applying joint compound, cleaning edges, scraping paint, and more.
- Soft-grip handle minimizes fatigue and offers all-day comfort, even when wet.
- **Stainless Blades:** A lateral hollow grind ensures ideal flex midway up the blade.
- **Carbon Steel Blades:** The stiffer blade and sharper edges are ideal for scraping and precision work.
- Mirror polished to reduce mud accumulation.

STAINLESS STEEL		CARBON STEEL
SIZE	SKU#	SKU#
1"	5-147	-
2"	5-148	-
3"	5-139	5-149
4"	5-140	5-150
5"	5-141	5-151
6"	5-142	5-152
8"	5-144	5-154
10"	5-146	5-156

COMFORT AND PERFORMANCE

LEVEL5 Soft-Grip Joint Knives provide all-day comfort with glass-reinforced polypropylene cores and soft-grip elastomer handles for a secure, ergonomic grip, even when wet.

Stainless Blades - Higher carbon and iron content enhance flex, edge retention, and corrosion resistance.

Carbon Steel Blades - Stiffer for scraping, precise work, and compound application, but require care to prevent corrosion.



WELDED STAINLESS JOINT KNIVES



UNBREAKABLE BONDS

LEVEL5 One-Piece Welded Knives are industry-leading, crafted with 17 assembly and 9 hand-polishing steps. The patent-pending full tang design with 3 internal control points ensures exceptional durability. Lightweight and comfortable, they clean easily.

- Perfect for setting and cutting drywall tape, applying joint compound, cleaning edges, scraping paint, and more.
- LEVEL5 grip profile was developed through years of finisher feedback to minimize hand fatigue.
- The curved handle-to-blade attachment improves rigidity for a perfect mid-blade flex.
- A lateral hollow grind ensures ideal flex midway up the blade.
- Mirror polished to reduce mud accumulation.

SIZE	REGULAR	STRETCH
	SKU#	SKU#
1.5"	5-401	-
2"	5-402	-
3"	5-403	-
4"	5-404	5-412
5"	5-405	5-413
6"	5-406	5-414
8"	5-408	5-415
10"	5-410	-

COMPOSITE HANDLE JOINT KNIVES



LIGHTWEIGHT AND DURABLE

Durable joint knives with lightweight polypropylene handles and a proprietary grip for all-day comfort. Stainless steel blades offer ideal flex and corrosion resistance.

- Perfect for setting and cutting drywall tape, applying joint compound, cleaning edges, scraping paint, and more.
- LEVEL5 grip profile was developed through years of finisher feedback to minimize hand fatigue.
- The curved handle-to-blade attachment improves rigidity for a perfect mid-blade flex.
- A lateral hollow grind ensures ideal flex midway up the blade.
- Mirror polished to reduce mud accumulation.

SIZE	SKU#
4"	5-504
5"	5-505
6"	5-506

welcome to the RED ZONE

SOFT GRIP TAPING KNIVES

- Used to bed tape, apply compound to joints and seams, and feather out the mud for a smooth finish.
- Soft-grip handle minimizes fatigue and offers all-day comfort, even when wet.
- The handle core is double-riveted to a heavy-gauge aluminum back plate for superior strength and rigidity.
- **Stainless Blades:** Precise flex for loading and skimming compound. Corrosion resistant for easy maintenance.
- **Carbon Steel Blades:** Flexible for precise feathering, but require rust prevention care.

	STAINLESS STEEL	BLUE STEEL
SIZE	SKU#	SKU#
6"	-	5-122
8"	5-134	5-124
10"	5-136	5-126
12"	5-137	5-127
14"	5-138	5-128



COMFORTABLE TAPING

LEVEL5 Taping Knives are durable & designed for comfort with an ergonomic soft-grip handle, even when wet. A thicker, wider blade back ensures the blade stays flat during use.

Stainless Steel Blades - Higher carbon and iron content enhance flex, edge retention, and corrosion resistance.

Blue Steel Blades - Outstanding flex, feel and work-ability. However, they will oxidize/ rust without proper care between uses.



BIG BACK TAPING KNIFE



MORE KNIFE, MORE MUD.

Constructed with a larger, thicker back plate, “Big Back” taping knives hold up to 25% more compound for getting more mud on the wall with each pass. The ergonomic soft-grip handle stays comfortable all day and minimizes hand fatigue.

Stainless Steel Blades - Higher carbon and iron content enhance flex, edge retention, and corrosion resistance.

Blue Steel Blades - Outstanding flex, feel and work-ability. However, they will oxidize/ rust without proper care between uses.

- Used to bed tape, apply compound to joints and seams, and feather out the mud for a smooth finish.
- “Big Back” knives feature a larger blade back for holding up to 25% more compound.
- The handle core is double-riveted to a heavy-gauge aluminum back plate for superior strength and rigidity.
- **Stainless Blades:** Precise flex for loading and skimming compound. Corrosion resistant for easy maintenance.
- **Blue Steel Blades:** Flexible for precise feathering, but require rust prevention care.

	STAINLESS STEEL	BLUE STEEL
SIZE	SKU#	SKU#
8"	5-190	5-180
10"	5-192	5-182
12"	5-194	5-184
14"	5-196	5-186
16"	5-198	5-188

COMPOSITE HANDLE TAPING KNIVES



LIGHTWEIGHT PERFORMANCE

Designed with a durable, impact resistant, polypropylene handle. The thick blade back and double riveted design ensure these knives stand the test of time.

Stainless Steel Blades - Higher carbon and iron content enhance flex, edge retention, and corrosion resistance.

- Used to bed tape, apply compound to joints and seams, and feather out the mud for a smooth finish.
- Ergonomic solid composite handle that is lightweight, durable and solvent resistant.
- **Stainless Blades:** Precise flex for loading and skimming compound. Corrosion resistant for easy maintenance.

SIZE	SKU#
6"	5-516
8"	5-518
10"	5-520
12"	5-512
14"	5-514

welcome to the RED ZONE

OFFSET KNIVES



GO HIGHER AND FURTHER

LEVEL5 Offset Taping Knives deliver smoother finishes with less effort, reducing wrist fatigue. The offset handle ensures hands stay clear of walls and provides a tighter angle. Removable hammer ends allow mounting to painter's poles or LEVEL5 extendable handles (with an optional adapter) for extended reach.

- The offset handle allows flatter blade angles for smoother finishes while keeping hands clear of fresh compound.
- 0.5mm FLEX blades are 4" deep and more flexible for finishing coats.
- 0.6mm STIFF blades are 3.5" deep and ideal for applying compound, and filling joints, and scraping.
- Removable hammer end enables this blade to be mounted to a LEVEL5 skimming blade pole, or any painter's pole.

	FLEX BLADE		STIFF BLADE	
SIZE	SKU#		SKU#	
8"	5-381		5-380	
10"	5-383		5-382	
12"	5-385		5-384	
14"	5-387		5-386	
16"	5-389		5-388	
18"	5-391		5-390	

MUD PANS



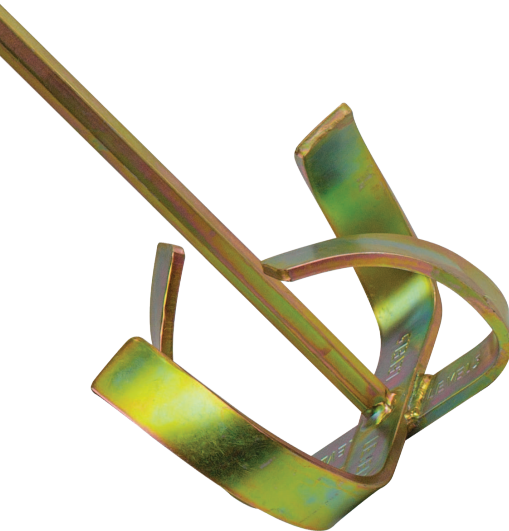
MOVE MUD LIKE A PRO

LEVEL5 Mud Pans work in conjunction with hand finishing tools to hold and transport joint compound during the application process. Straight edges allow for quick swipes and a contoured bottom ensures a comfortable grip during all-day use.

- Contoured bottom ensures a comfortable grip, easy mixing, and quick cleaning.
- Built with nearly 20 years of finisher input, ensuring reliability for daily job site use.
- Straight, sheared edges ensure quick, clean putty knife swipes.
- Made from rigid 21-gauge (0.0315) polished stainless steel with heli-arc welded, water-tight end caps for durability.

SIZE	SKU#
12"	5-332
14"	5-334
16"	5-336

MUD MIXERS



SPLATTER-FREE MIXING

LEVEL5 Mixing Paddles are designed to reduce drill wear, prevent air bubbles, and eliminate splattering.

32" or 28" Mixing Paddles - Mixing drywall compound, paint, plaster, grout, cement and other low-density materials.

13" Mixing Paddle - Mixing paint or other compound such as grout, thinset and drywall in small containers (including mud pans).

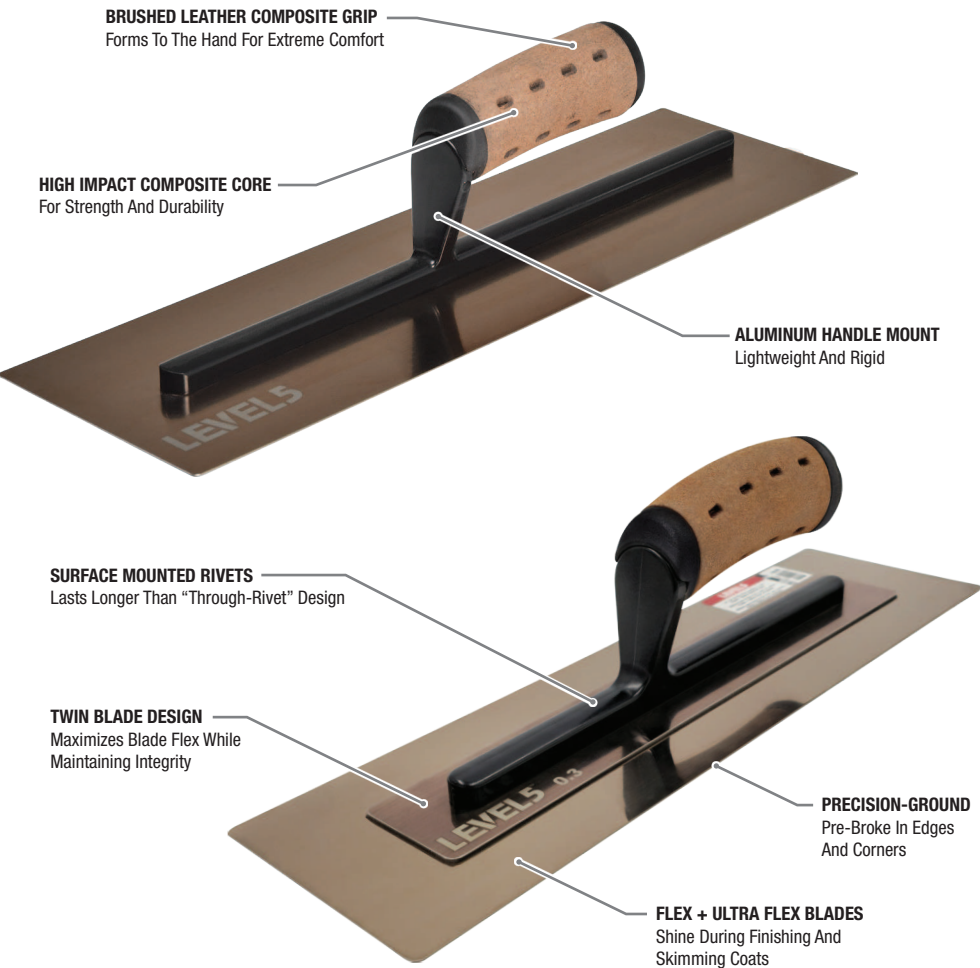
- Proprietary design reduces drill drag and wear by 20%.
- Head shape pulls mud towards the center of the bucket for splatter-free operation.
- Mixing action virtually eliminates air bubbles for a smooth, consistent mix.
- Durable carbon steel with premium plating for corrosion resistance and easy cleaning.

SIZE	SKU#
32" Long, 7" Head	5-292
32" Long, 5" Head	5-291
28" Long, 4" Head	5-294
13" Long, 2" Head	5-293
2-Piece Mixing Head	5-296
Mixer Adapter w/ Key	5-295

TROWELS

PERFECTLY FLAT WALLS EVERY TIME

LEVEL5 offers a variety of finishing trowels ranging from thicker trowels for compound application across wide surfaces to FLEX and ULTRA-FLEX trowels for finishing and skimming coats. All trowels feature brushed leather grips, a durable surface mounted rivet design, and premium European stainless steel.



- Versatile tools used anywhere from loading mud onto walls to final skimming coats for a mirror finish.
- **0.7mm Trowels** - Available in Flat and Curved blade shapes, ideal for compound application and leveling joints or seams.
- **0.4mm FLEX and 0.3mm ULTRA-FLEX** Trowels - Perfect for finishing coats, feathering mud, and skim coats.
- Powder-coated aluminum handle mounts for rigidity and durability.
- European stainless steel blades and composite grips ensure these trowels are comfortable and reliable.

STANDARD

	0.7MM	FLAT BLADE	CURVED BLADE
SIZE	SKU#	SKU#	
12"	4-961		4-971
14"	4-962		4-972
16"	4-963		4-973
18"	4-964		-

FLEX

	0.4MM	100MM WIDE	120MM WIDE
SIZE	SKU#	SKU#	
12"	4-965		4-974
14"	4-966		4-975
16"	4-967		4-976

ULTRA FLEX

	0.3MM	100MM WIDE
SIZE	SKU#	
12"		4-994
14"		4-995
16"		4-996

HAWK



THE TROWEL'S BEST FRIEND

The patent-pending LEVEL5 Drywall Hawk features a hard-coat, non-stick finish for easy cleaning and wear resistance. Designed for all-day use, it includes a soft-grip ergonomic handle with a durable foam pad for comfort. The hollow handle allows easy mounting on scaffolds or workstations and is removable for cleaning and storage.

- Ergonomic soft-grip handle for all-day comfort.
- Solid extruded aluminum top for years of reliable use.
- Hollow handle for mounting on scaffold or workstations.
- Handle is removable for easy cleaning and storage.

SIZE	SKU#
13" x 13"	5-325
16" x 16"	5-326

welcome to the RED ZONE

9” DRYWALL SANDER



SWIRL-FREE SANDING

The LEVEL5 9” Radial Sanding Head covers large areas per stroke, with a rotating design for even finishes without skipping. Made from lightweight anodized aluminum for reduced arm and shoulder strain, it features a rubber bumper to protect adjacent walls. Compatible with ACME threaded poles or the LEVEL5 Radial Sander Pole.

- Spinning radial design for a consistent sanding finish. Circular shape eliminates flipping and skipping on the wall.
- Rubber bumper allows corner sanding without damaging the opposite wall.
- Hook & loop system enables quick sanding disc changes.
- Compatible with the LEVEL5 Sander Pole or any ACME threaded sanding pole.
- Premium anodized aluminum for outstanding wear life.

DESCRIPTION	SKU#
Sanding Head	5-342

SANDING POLE



GET THE MOST OUT OF YOUR SANDER

Get the most out of your radial sander with LEVEL5's 48” anodized aluminum pole. Designed to work with the LEVEL5 9” Radial Sanding Head or any other ACME threaded sanding heads, this pole lets you reach ceilings and high walls with ease. The aluminum construction reduces weight in your hands and shoulders, while offering outstanding durability on the job site.

- The LEVEL5 48” Radial Sander Pole pairs with the 9” Sanding Head for effortless ceiling and high wall sanding.
- Made from lightweight aluminum to minimize hand and shoulder strain.
- Designed for the LEVEL5 9” Radial Sanding Head, with universal threads for most 9” sander heads.

DESCRIPTION	SKU#
Sanding Pole	5-343

9” SANDING DISCS



GET THE MOST OUT OF YOUR SANDER

LEVEL5 Radial Sanding Discs, designed for the 9” Radial Sanding Head and other compatible heads, deliver exceptional sanding finishes. The hook-and-loop attachment ensures a secure fit, while premium abrasives and heavy-duty paper reduce tearing.

80 - 120 Grit - Smoothing compound and removing imperfections.
150 - 180 Grit - Final sanding before priming and scratch removal
200 - 220 Grit - Final smoothing and prep for high-gloss or detail painting.

- Designed to provide a smooth sanding finish along walls and ceilings.
- These hook-and-loop sanding pads attach easily to the LEVEL5 radial sanding head or other compatible heads.
- Built from premium abrasives & heavy duty paper to reduce tearing.
- Available from 80 to 220 grit for all finishing needs.

GRIT	SKU#
80 Grit	5-345
120 Grit	5-346
150 Grit	5-347
180 Grit	5-348
200 Grit	5-349
220 Grit	5-350

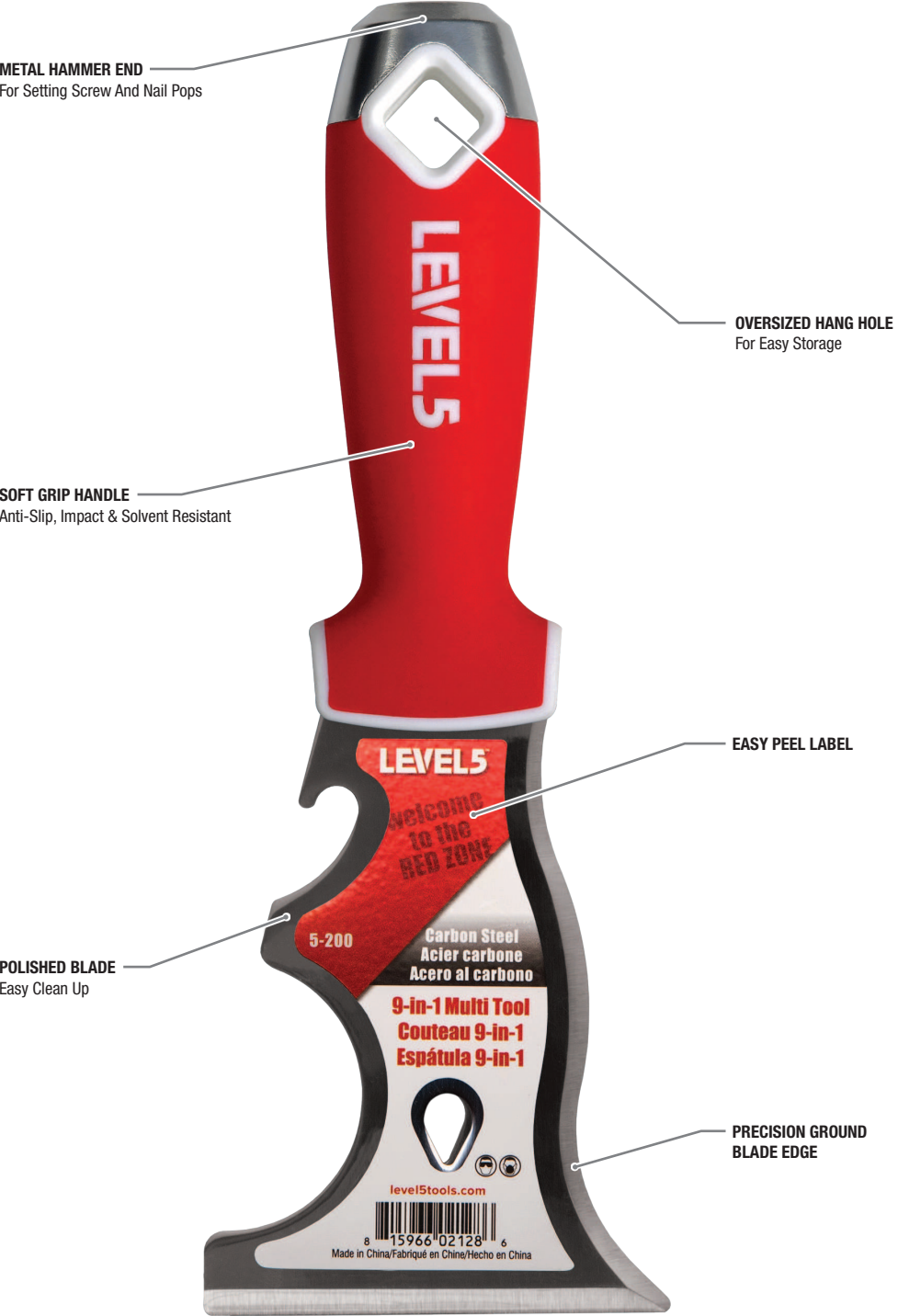
9-IN-1 PAINTER'S TOOL

THE MOST VERSATILE TOOL IN YOUR KIT

The “go-to” hand tool for most job site tasks. Features a polished carbon steel blade for superior durability and is great for scraping tasks. Can be used as: a straight scraper, curved scraper (concave and convex), gouger, paint roller cleaner, can opener, bottle opened, nail puller, screwdriver and hammer.

- Heavy-duty, hardened, and tempered for durability, staying sharper longer than stainless steel.
- Mirror-polished blade for easy cleaning.
- Built from a glass-filled polypropylene core with soft-grip TPR for a comfortable, non-slip grip.

DESCRIPTION	SKU#
9-in-1 Painter's Tool	5-200



welcome to the RED ZONE

TRIM PULLER

TRIM REMOVAL MADE EASY

The LEVEL5 Trim Puller is a professional-grade tool for efficient trim removal, featuring an angled handle and split blade to protect trim, drywall, and your knuckles. Precision-pointed ends score caulking, while the premium steel blade handles scraping tasks like removing paint, lacquer, and popcorn ceilings.



- Scores caulk and separates baseboards from walls without causing damage.
- The thick, rigid steel blade excels at scraping paint, lacquer, popcorn ceilings, and other finishes.
- A split blade design combines prying and hammering into a single step.
- Angled handle prevents knuckle contact during prying.
- Glass-reinforced polypropylene core and metal hammer end for durability and shock resistance.

DESCRIPTION	SKU#
Trim Puller	5-203



BUCKET SCOOP



LOAD UP YOUR TOOLS

The LEVEL5 Bucket Scoop's precision-cut stainless steel blade fits joint compound buckets, while its lightweight, ergonomic composite handle ensures comfort, easy cleaning, and efficient scooping of drywall mud, mortar, stucco, and more.

- Used to scoop compound, mortar, stucco and other materials out of standard buckets.
- Precision-cut blade fits standard joint compound buckets.
- Premium stainless steel blade for corrosion resistance.
- Lightweight composite handle for comfort and easy cleaning.

DESCRIPTION	SKU#
Bucket Scoop	5-210

JAB SAW



EFFORTLESS CUTTING

The LEVEL5 Drywall Saw's sharpened teeth effortlessly punch through drywall or similar compounds. The deep gullets between the teeth keep the blade free of material when in use. Its soft-grip handle offers ergonomic all-day comfort and anti-slip protection.

- Designed for cutting precise holes and openings for electrical boxes, light fixtures, vents etc.
- High-carbon steel blade resists bending and stays sharp.
- Cross-ground teeth cut both ways for fast, clean, effortless cutting.
- Lightweight, impact-resistant handle with a glass-reinforced nylon core, and a larger guard for better leverage and safety.

DESCRIPTION	SKU#
Jab Saw	5-100

CORNER TOOLS



CORNERS DONE RIGHT

LEVEL5 Corner Trowels ensure precise compound application to inside or outside corners. Soft-grip handles provide comfort and slip resistance, while alloy hammer ends enhance drop protection and nail resetting.

- Flexible stainless steel ensures a smooth finish on inside corners.
- Ergonomic soft grip handle helps reduce fatigue when spreading compound along corners.
- Alloy hammer end for nail resetting and enhanced drop protection.
- Large hang holes for convenient drywall tool organization.

DESCRIPTION	SKU#
4" x 3.5" Inside Corner Trowel	5-310
6.5" x 11.5" Inside Corner Trowel	5-312
6.5" x 11.5" Inside Corner Trowel	5-320

welcome to the RED ZONE

CLIPPED KNIVES



A TIGHT SPOT TITAN

The LEVEL5 Clipped Drywall Knife excels at finishing tight inside corners. Its ergonomic soft-grip handle makes handling this tool truly effortless and comfortable.

- Soft-grip handle reduces fatigue and provides all-day comfort, even when wet.
- Built for reliable, daily use on the job site. Designed and built using nearly 20 years of input from professional finishers.

DESCRIPTION	SKU#
6" Clipped Knife	5-201

POINTED KNIVES



FOR THOSE HARD TO REACH PLACES

The 3.5" Pointed Joint Knife is a versatile tool designed for precision in tight spaces and detailed drywall work. Its pointed blade allows for easy access to corners, cracks, and seams, making it perfect for patching, cleaning, and achieving smooth, professional finishes in hard-to-reach areas.

- Flexible stainless steel blade will not rust and is mirror-polished for easy cleanup.
- Soft-grip handle reduces fatigue and provides all-day comfort, even when wet.

DESCRIPTION	SKU#
3.5" Pointed Knife	5-202

TOOL BAGS



MOVE TOOLS IN STYLE

Our durable nylon zipper-top tool bags keep your tools organized and accessible on the toughest job sites. They feature spacious interiors, multiple exterior pockets, and adjustable straps for versatile, comfortable carrying.

- Heavy duty nylon construction and zippered pockets for secure storage on the job site.
- Padded grips lets you carry this tool bag as a duffel, or over-the-shoulder with adjustable straps.
- **Flat Bag** - Features a spacious interior compartment with multiple open pockets.
- **Duffel Bag** - Large velcro side pockets, mesh pockets on each end, and a spacious opening for tool access.

SIZE	SKU#
Flat, 20"	5-360
Duffel, 24"	5-362

5-690



PROFESSIONAL HAND TOOL SET WITH DUFFEL BAG

This comprehensive set is ideal for finishing professionals and DIY enthusiasts alike, and includes all the high-performance tools you need to tackle any drywall project with ease.

SET CONTENTS	SKU#
16" Aluminum Skimming Blade	4-916
24" Aluminum Skimming Blade	4-924
8" SS Taping Knife w/ Soft-Grip	5-134
10" SS Taping Knife w/ Soft-Grip	5-136
12" SS Taping Knife w/ Soft-Grip	5-137
14" SS Taping Knife w/ Soft-Grip	5-138
1.5" Welded SS Joint Knife	5-401
2" Welded SS Joint Knife	5-402
3" Welded SS Joint Knife	5-403
4" Welded SS Joint Knife	5-404
5" Welded SS Joint Knife	5-405
6" Welded SS Joint Knife	5-406
Jab Saw	5-100
9-in-1 Painters tool	5-200
6" SS Clipped Knife	5-201
3.5" SS Pointed Knife	5-202

- This set contains all the essential tools for hand finishing drywall with professional results.
- Features an assortment of specialty knives, a jab saw, painters knife, and bucket scoop.
- Skimming Blades are designed to produce an mirror-like finish by applying a thin, uniform layer of joint compound over walls & ceilings.
- Joint knives feature full-tang steel blades with precise flex midway, not near handle.
- Taping knives feature premium blades, robust aluminum shoulders. Handles are double-riveted for strength.
- Soft comfort grip handles are light weight and ergonomically designed for all day use with minimal hand fatigue.

SET CONTENTS (cont)	SKU#
6" SS Bucket Scoop	5-210
13" Mixing Paddle, 2" Head	5-293
28" Mixing Paddle, 4" Head	5-294
14" SS Mud Pan	5-334
24" Duffel Tool Bag	5-362

5-600



STAINLESS STEEL FINISHING SET

This LEVEL5 Stainless Steel Finishing Set comes with all the hand tools necessary to tackle many professional and DIY finishing jobs.

SET CONTENTS	SKU#
10" SS Taping Knife w/ Soft-Grip	5-136
12" SS Taping Knife w/ Soft-Grip	5-137
5" SS Joint Knife w/ Soft-Grip	5-141
6" SS Joint Knife w/ Soft-Grip	5-142
14" SS Mud Pan	5-334

- Joint knives are extremely lightweight, comfortable in the hand and easy to clean.
- Taping knives feature premium build quality and offer precision results with fast application rates.
- Mud Pans feature heli-arc welded corners for fast swipes and easy cleaning.
- Soft-Grip Handles offer all-day comfort, slip-resistance and improved drop protection.

5-683



CONTRACTOR'S HAND TOOL SET WITH BAG

Say goodbye to hunting for individual tools or compromising on quality. This contractor's set provides a complete selection of professional-grade hand finishing tools, ready for any job.

SET CONTENTS	SKU#
8" SS Taping Knife w/ Soft-Grip	5-134
10" SS Taping Knife w/ Soft-Grip	5-136
12" SS Taping Knife w/ Soft-Grip	5-137
14" SS Taping Knife w/ Soft-Grip	5-138
1.5" Welded SS Joint Knife	5-401
2" Welded SS Joint Knife	5-402
3" Welded SS Joint Knife	5-403
4" Welded SS Joint Knife	5-404
5" Welded SS Joint Knife	5-405
6" Welded SS Joint Knife	5-406
Jab Saw	5-100
9-in-1 Painters tool	5-200
6" SS Clipped Knife	5-201
3.5" SS Pointed Knife	5-202

- Soft-Grip Handles offer all-day comfort, slip-resistance and improved drop protection.
- Taping Knives feature a premium build quality and offer precision results with fast application rates.
- Mixing Paddles provide a splatter-free operation and reduce wear on your drill by 20%.
- Mud Pans feature heli-arc welded corners for fast swipes and easy cleaning.
- Bucket Scoops increase speed and efficiency when scooping compound from a bucket.
- Jab Saws feature precision cross-ground teeth to cut in both push and pull directions for fast, clean and effortless cutting.

SET CONTENTS (cont)	SKU#
6" SS Bucket Scoop	5-210
13" Mixing Paddle, 2" Head	5-293
14" SS Mud Pan	5-334
20" Flat Tool Bag	5-360

5-609



DELUXE STAINLESS STEEL HAND TOOL SET

This LEVEL5 Stainless Steel Finishing Set comes with all the hand tools necessary to tackle many professional and DIY finishing jobs.

SET CONTENTS	SKU#
8" SS Taping Knife w/ Soft-Grip	5-134
10" SS Taping Knife w/ Soft-Grip	5-136
12" SS Taping Knife w/ Soft-Grip	5-137
14" SS Taping Knife w/ Soft-Grip	5-138
4" SS Joint Knife w/ Soft-Grip	5-140
5" SS Joint Knife w/ Soft-Grip	5-141
6" SS Joint Knife w/ Soft-Grip	5-142
Jab Saw	5-100
9-in-1 Painters tool	5-200
6" SS Clipped Knife	5-201
3.5" SS Pointed Knife	5-202
6" SS Bucket Scoop	5-210

- Soft-Grip Handles offer all-day comfort, slip-resistance and improved drop protection.
- Joint Knives are extremely lightweight, comfortable in the hand and easy to clean.
- Taping Knives feature a premium build quality and offer precision results with fast application rates.
- Mixing Paddles provide a splatter-free operation and reduce wear on your drill by 20%.
- Mud Pans feature heli-arc welded corners for fast swipes and easy cleaning.
- Bucket Scoops increase speed and efficiency when scooping compound from a bucket.
- Jab Saws feature precision cross-ground teeth to cut in both push and pull directions for effortless cutting.

SET CONTENTS (cont)	SKU#
32" Mixing Paddle, 7" Head	5-292
14" SS Mud Pan	5-334

5-651



3 PIECE STAINLESS STEEL JOINT KNIFE SET

These versatile tools are used for setting & cutting drywall tape, applying joint compound & other filler materials, cleaning up drywall edges, scraping paint & residue, resetting exposed screws, and much more...

SET CONTENTS	SKU#
4" SS Joint Knife w/ Soft-Grip	5-140
5" SS Joint Knife w/ Soft-Grip	5-141
6" SS Joint Knife w/ Soft-Grip	5-142

- Perfect for taping, applying compound, cleaning edges, scraping, resetting screws, and more.
- LEVEL5's grip, refined through finisher feedback, minimizes fatigue and ensures all-day comfort.
- Stainless steel blades with mid-blade flex and pre-broken-in edges.
- Soft-Grip Handles offer all-day comfort, slip-resistance and improved drop protection.

5-619



3 PIECE STAINLESS STEEL TAPING KNIFE SET

With durable stainless steel blades and ergonomic handles, these knives make taping and coating faster and easier. Designed for precision and efficiency, they're essential for anyone who values top-quality results on every project.

SET CONTENTS	SKU#
8" SS Taping Knife w/ Soft-Grip	5-134
10" SS Taping Knife w/ Soft-Grip	5-136
12" SS Taping Knife w/ Soft-Grip	5-137

- Precise flex for a better finish and faster application rates. Corrosion resistant.
- Lightweight, comfortable and ergonomically designed for all-day use with minimal fatigue.
- Glass reinforced nylon core. Impact and solvent resistant. Double riveted to the blade using stainless steel rivets.
- Alloy metal hammer end for resetting drywall nails (also adds blade protection when dropped). Large hang hole.
- Soft-Grip Handles offer all-day comfort, slip-resistance and improved drop protection.

LEVEL5®

FINISHING TOOLS YOU CAN TRUST™

LEVEL5 Tools has been perfecting its line of drywall tools since 2011. Our extended family includes thousands of professional finishers throughout the USA, Canada and abroad. Their livelihoods depend on the quality, performance, and reliability of our drywall tools. Through their valued feedback and a culture of ongoing research and innovation, we make the tools that make their lives on the job easier, more efficient, and ultimately more profitable.



WORTHINGTON
ENTERPRISES

LEVEL5®, L5® and the LEVEL5 Logo are registered trademarks and "Finishing Tools You Can Trust™" is a trademark of LEVEL5 Tools LLC.